

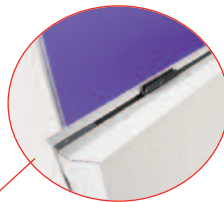
7 Panel Folding Kit

Stylish 7 panel folding kit with tabletop. Ideal for presentations and Exhibitions.



features & benefits

- Easy to transport with modular construction and carry bag
- Lightweight honeycombe construction
- Baseline & Baseline plus styles allow graphics to be fixed flush within the extruded frame
- Baseline Available in 3 standard panel sizes
Baseline Plus Available in 2 standard panel sizes
- Choice of standard and luxury foam backed loop Nylon fabrics in a range of colours
- Choice of black or grey frames



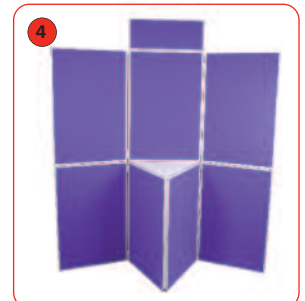
Take the 1st set of panels (with connecting clips) and open out until the above shape is achieved and stable. (ensure the connecting clips are at the top of the panels.



Lift the set of 3 panels and place onto of the first set of panels.



Lower the table top onto the bottom set of panels making sure it is securely in place



Fit header panel to the top centre hinged push downward to secure the connecting clips.

Technical Specifications

Baseline Panel sizes:

- KK114** 900 x 600mm
- KK214** 1000 x 625mm
- KK314** 1000 x 700mm

Baseline Plus Panel Size

- KKP114** 900 x 600mm
- KKP314** 1000 x 700mm

header panel at 250mm (H) x panel width.

Frame Styles

Baseline & Baseline plus

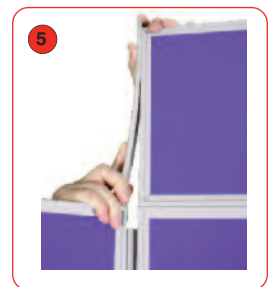
Additional info

Recommended Carry Bags

- Basic bags** are manufactured in 600 denier polypropylene with grab handle
- Standard bags** are manufactured in 1200 denier polypropylene with grab handle and shoulder strap.
- AB110** basic bag for KK117
- AB109** Standard bag for KK117
- AB114** basic bag for KK217 and KK317
- AB115A** Standard bag for KK217 and KK317
- AB110** x2 Standard bag for KKP114
- AB114** x2 Standard bag for KKP314

Recommended Carry Cases

- AC308** polypropylene case for KK117
- AC312** Polypropylene case for KK217 and KK317



Finally clip header caps to both vertical sides of the header panel. (Baseline only)