

A very popular and highly versatile tension banner stand that is lightweight, portable and very simple to use. Available in 2 width options with adjustable height, Uno is flexible enough to carry a wide variety of graphics.



## features & benefits

- Lightweight components
- Telescopic pole for adjustable height
- Quick to assemble and easy to use
- Includes carry bag/tube
- Units can join together to form a seamless graphic wall (\*requires additional components)



Linked Uno's forming a seamless graphic wall

| hardware specifications   | graphic specifications   | additional info   |
|---|--|---|
| <p><b>Hardware Dimensions (mm):</b><br/>                     Uno<br/>                     2210 (h - max) x 800-1000 (w) x 365 (d)<br/>                     Uno 2.9</p> <p><b>Weight:</b><br/>                     Uno - 4.5kg approx<br/>                     (800mm width including carry bag)</p> | <p><b>Visible Graphic Dimensions (mm):</b><br/>                     Uno - 2200h (max) x 800/1000 (w)</p> <p><b>Minimum Graphic Heights:</b><br/>                     Uno - 850mm</p> <p><b>Graphic Substrate:</b><br/>                     Recommended material thickness<br/>                     between 225 - 300 microns</p> | <p><b>Included in kit:</b><br/>                     Top rail, bottom rail, stabilising foot,<br/>                     telescopic pole set, wrap and carry<br/>                     bag/tube</p> <p><b>Availability:</b><br/>                     Powdercoated Black</p> <p><b>Seamless graphic walls:</b><br/>                     Require BR404 joining bars and<br/>                     EM400 edge to edge magtape</p> |

# Assembly Instructions

## Bannerstand Assembly



Kit includes: top rail, bottom rail, stabilising foot, telescopic poles, wrap and carry bag/tube



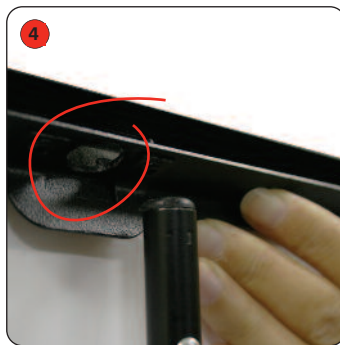
Take the stabilising foot and slide into the bottom rail in the direction of the green arrow until it is centrally positioned and locked into place.



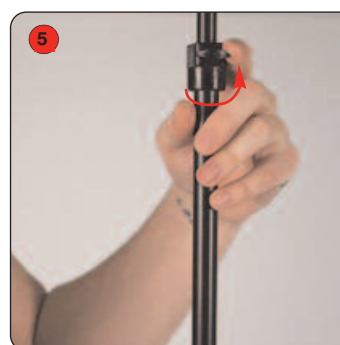
Slot the bottom of the telescopic pole into the foot.



Lengthen the pole by pull out each section, pulling out the pole to the desired height and then twist the thumb screw to secure pole into place



Carefully unroll the graphic and secure into position by locating the top rail hole with the telescopic pole.



Repeat Step 3 if necessary to tension the graphic image.